



ADVANCE WITH US

**PRODUCT AND  
SERVICES**

CATALOG

# TABLE OF CONTENTS



## EXTREME**APPLICATIONS**

EXTREMECLOUD™ IQ.....	4
EXTREMECLOUD IQ ESSENTIALS.....	4
EXTREMECLOUD IQ ADD-ON APPLICATIONS.....	4
EXTREMECLOUD IQ SITE ENGINE.....	5
EXTREMECLOUD ADD-ON SERVICES.....	5
EXTREME SERVICE PROVIDER APPLICATIONS.....	5



## EXTREME**WIRELESS**

EXTREME UNIVERSAL WIRELESS: WI-FI 6E APS (802.11AX) - INDOOR APS.....	7
EXTREME UNIVERSAL WIRELESS: WI-FI 6 APS (802.11AX) - INDOOR APS.....	7
EXTREME UNIVERSAL WIRELESS: WI-FI 6 APS (802.11AX) - OUTDOOR/HARDENED APS.....	7
WI-FI 6 APS (802.11AX) - INDOOR APS.....	8
WI-FI 6 APS (802.11AX) - OUTDOOR/HARDENED APS.....	8
WI-FI 5 APS (802.11AC WAVE 2) - PLUGGABLE APS.....	9
WIRELESS CONTROLLERS.....	9



## EXTREME**WIRED**

EXTREME UNIVERSAL PLATFORMS.....	10
EXTREME XOS SWITCHES.....	11
EXTREME EXTENDED EDGE SWITCHES.....	12
EXTREME FABRIC CONNECT ENABLED SWITCHES.....	13
EXTREME SLX AND VDX PLATFORMS.....	14
EXTREME SWITCHES AND ROUTERS FOR SMALL BUSINESS AND INDUSTRIAL DEPLOYMENTS.....	15
EXTREME CLOUD-NATIVE VISIBILITY PLATFORM.....	15



## PROFESSIONAL SERVICES

- Experienced solution architects and network engineers
- Managed deployments
- Comprehensive installation
- Project management
- Network and security consulting
- Resident engineering services
- LAN/WAN, VoiP security and wireless



## MAINTENANCE AND SUPPORT

- Global presence
- 7x24x365 in-house technical assistance
- Software updates and upgrades
- Hardware replacement options
- Flexible go to market options
- eSupport access to solutions, knowledge base, and communities



**PREMIER  
SERVICES**

## PREMIER SERVICES

- Designated resources
  - Program manager
  - Support engineer
- Best practices, program, and support reviews
- Equipment optimization and monitoring
- Proactive updating



## MANAGED SERVICES

- 7x24x365 network monitoring
- Proactive problem notification
- Extensive cloud-based dashboard
- Comprehensive technical phone support
- Configuration and release updates
- Advance next business day hardware updates



## ExtremeCloud IQ

Centralized network management

### Key Features

- Delivers network automation, insights and assurance
- Available as a public, private or on-premises solution
- Powerful artificial intelligence and machine learning capabilities
- Continuous delivery of updates and features
- Includes integrated AirDefense, Guest, Location, and IoT Essential Application

## EXTREMECLLOUD IQ ESSENTIALS



## Extreme IoT Essentials

A simple IoT security solution that is designed to protect high-risk, wired IoT devices

### Key Features

- Utilizes security profiles
- Simplifies IoT on-boarding and security
- Enables floor staff to on-board and move IoT devices without involving network/IT



## ExtremeGuest Essentials

Robust and comprehensive guest engagement solution that enables IT admin to use analytical insights to engage visitors with personalized engagements

### Key Features

- Sponsored Access/Self-registration/Social ID/SMS: Multiple onboarding options
- Completely customizable location specific splash pages
- Rich set of analytics providing business insight



## ExtremeLocation Essentials

Track assets and users while understanding how they navigate your network

### Key Features

- Highly scalable, multi-tier location services
- Integrates WiFi, BLE and geo-fencing technologies to track both people and assets
- Real-time and historical location analytics including site, zone and associate analytics
- Integrated contextual engagement engine to provide customers with special offers

## EXTREMECLLOUD IQ ADD-ON APPLICATIONS



## ExtremeAirDefense Essentials

Simplifies the protection, monitoring and security of your Wireless LAN networks

### Key Features

- Extends wireless security beyond rogue detection and mitigation to include wireless threat detection
- Visibility into 40+ wireless security threats
- Centralized view for all locations based on security threat score



### ExtremeCloud IQ - Site Engine

Centralized management cloud native, non-cloud native and 3rd party devices

#### Key Features

- Extends the value of ExtremeCloud IQ
- Enables a cloud migration path for third party and non-cloud native devices
- Provides visibility for cloud native, non-cloud native and multivendor devices
- Provides flexibility to manage networks in public cloud (i.e., AWS, GCP, Azure) via internet connected mode or in local non- internet connected (air gapped) mode



### ExtremeControl for ExtremeCloud IQ - Site Engine

Granular policy-based control

#### Key Features

- Centralized role-based network access control
- Ability to roll out consistent policies from the edge to the data center and into the multi-cloud
- Secure guest, BYOD and IoT management
- Device profiling; agent-based and agentless security



### ExtremeAnalytics for ExtremeCloud IQ - Site Engine

Real-time network and application insights

#### Key Features

- Collect consistent data from the edge to the data center (physical and virtual) and into the multi-cloud
- Gain insights into your application usage, users and devices across all locations
- Improve security by blocking shadow IT, unapproved applications and unusual traffic
- Proactive monitoring of application performance to avoid disruption

## EXTREMECLOUD ADD-ON SERVICES



### Extreme AirDefense

Wireless intrusion prevention system

#### Key Features

- 24x7x365 detection of wireless vulnerabilities and unusual network activity
- Real-time detection and termination of rouge access points
- Instant notification and response for policy violations
- Industry-leading threat detection library



### ExtremeCloud NAC

Cloud-managed network access control (NAC)

#### Key Features

- Vendor-agnostic NAC solution for wireless/wired clients
- Device onboarding, guest management, automated device provisioning, device profiling and access control
- Creation and administration of granular network policies
- Comprehensive authentication toolset with built in RADIUS server

## EXTREME SERVICE PROVIDER APPLICATIONS



### Extreme Fabric Automation

Automated provisioning of IP Fabrics

#### Key Features

- Reduces network provisioning from days to seconds with built-in automation
- Automates Day 0 infrastructure provisioning (underlay and overlay)
- Automates Day 1 edge port provisioning to simplify compute, server, storage and tenant connectivity
- Simplified eco-system integrations bridging the gap between physical infrastructure and orchestration



### Extreme Session Director

Session-based intelligence for mobile operators

#### Key Features

- Works with Extreme Packet Brokers to deliver subscriber-aware traffic load balancing, filtering and sampling
- Makes session-aware forwarding decisions that are enforced by the Packet Brokers.
- Enables cost effective scaling of the monitoring infrastructure by off-loading resource intensive functions
- Isolates voice traffic in the mobile network so that it can be forwarded to specialized voice analytics platforms

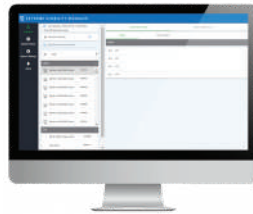


## Virtual Packet Broker and Virtual TAP

Scalable visibility and monitoring

### Key Features

- Comprehensive visibility to secure, monitor and optimize virtualized networks
- Analyzes traffic between application VMs; forwarding to specialized tools as required
- Continuously adjusts to changes in traffic volume and flow patterns
- Supports traffic interception, filtering and optimization to maximize productivity of network monitoring and analytic tools



## Extreme Visibility Manager

Centralized management of Extreme 9920, SLX, and MLXe packet brokers

### Key Features

- Automates the discovery, configuration back ups and software upgrades for Packet Brokers
- Granular configuration control at the device and port levels
- Intuitive point and click GUI interface to reduce errors
- Simple integration with third party management applications via APIs





**AP4000**

Wi-Fi 6E (802.11ax) 2x2 tri-radio cloud managed indoor access point

**Key Features**

- Tri-radio design 6 GHz, 5 GHz, 2.4 GHz, and tri-frequency sensor
- Dedicated threat sensor for uncompromising security
- Fully functional over 802.3at



**AP5010**

Wi-Fi 6E (802.11ax) 4x4 tri-radio cloud managed indoor access point

**Key Features**

- Tri-radio design 6 GHz, 5 GHz, 2.4 GHz, and tri-frequency sensor
- Option of on-premises or cloud management
- Fully functional Wi-Fi over 802.3at(edited)



**AP302W**

Wi-Fi 6 (802.11ax) 2x2 dual radio cloud managed indoor access point with switch

**Key Features**

- Compact wallplate access point and switch with embedded IoT technology designed for wall or desktop mount
- Ideal for use-cases such as hotel rooms, cruise ships, residential halls, or other multi-dwelling-unit deployments
- Software programmable modes to optimally manage radios
- Universal: can run multiple Extreme operating systems, providing flexibility and choice while minimizing total cost of ownership



**AP410C**

Wi-Fi 6 (802.11ax) cloud managed 4x4 tri-radio indoor access point

**Key Features**

- Tri-Radio design - 5GHz, 2.4GHz and dual band sensor
- Software Selectable Radio (SSR) - dual 5GHz capable
- Dedicated threat sensor for uncompromising security



**AP305C/CX**

Wi-Fi 6 (802.11ax) cloud managed 2x2 dual software defined radio indoor access point

**Key Features**

- Software Defined Radios - Dual 5GHz capable
- Fully functional with 802.3af PoE



**AP460C**

Wi-Fi 6 (802.11ax) 4x4 dual software defined radio outdoor access point

**Key Features**

- Outdoor IP67 Rated
- Software Defined Radios - Dual 5GHz capable
- Internal Omni or Sector antenna options
- Fully functional over 802.3at



**AP505i**

Wi-Fi 6 (802.11ax) 4x4 dual radio indoor access point

**Key Features**

- Dual Radio (dual band concurrent)
- Multi-rate GE port (2.5)
- IoT Radio: BLE and IEEE 802.15.4 USB



**AP310i/e**

Wi-Fi 6 (802.11ax) 2x2 dual software defined radio indoor access point with external antenna options

**Key Features**

- Software Defined Radios - Dual 5GHz capable
- POE Out
- Integrated BLE, Zigbee and USB for IOT requirements



**AP510i/e**

Wi-Fi 6 (802.11ax) 4x4, 4x4 dual software defined radio indoor access point with external antenna options

**Key Features**

- Software Defined Radios - Dual 5GHz capable
- Multi-rate GE port (2.5/5)
- Redundant PoE w/ Failover
- IoT Radio: BLE and IEEE 802.15.4 USB



**AP650/650X**

Wi-Fi 6 (802.11ax) cloud managed 4x4, 4x4 dual software defined radio indoor access point with external antenna options

**Key Features**

- Software Defined Radios - Dual 5GHz capable
- 1 Gig and 2.5 GE ports for flexible backhaul connectivity
- Integrated BLE, Zigbee and USB for IoT requirements



**AP510C/CX**

Wi-Fi 6 (802.11ax) cloud managed 4x4, 4x4 dual software defined radio external antenna indoor access point

**Key Features**

- Software Defined Radios - Dual 5GHz capable
- 1 Gig and 2.5 GE ports for flexible backhaul connectivity
- Integrated BLE, Zigbee and USB for IoT requirements



**AP410i/e**

Wi-Fi 6 (802.11ax) 4x4 tri-radio indoor access point with external antenna options

**Key Features**

- TriRadio design - 5GHz, 2.4GHz and dual band sensor
- Dedicated threat sensor for uncompromising security
- 1 Gig and 2.5 GE ports for flexible backhaul connectivity



**AP360i/e**

Wi-Fi 6 (802.11ax) 2x2 dual software defined radio indoor access point with external antenna options

**Key Features**

- Outdoor IP67 Rated
- Dedicated threat sensor for uncompromising security
- Fully functional over 802.3af



**AP560i/h**

Wi-Fi 6 (802.11ax) 4x4 dual software defined radio outdoor access point

**Key Features**

- Outdoor IP67 Rated
- Software Defined Radios - Dual 5 GHz capable
- Integrated and External Antennas
- 1 Gig and 5 Gig Uplink ports



**460i/e**

Wi-Fi 6 (802.11ax) 4x4 dual software defined radio outdoor access point

**Key Features**

- Outdoor IP67 Rated
- Software Defined Radios - Dual 5GHz capable
- Internal Omni or Sector antenna options
- Fully functional over 802.3at





## AP30

The first enterprise pluggable access point

### Key Features

- Automated out-of-the-box provisioning
- Full-featured enterprise access point in new compact design
- Multiple operating modes for instant network access and sensor services
- Replace or augment traditional ceiling and wall-mounted access points

## WIRELESS CONTROLLERS

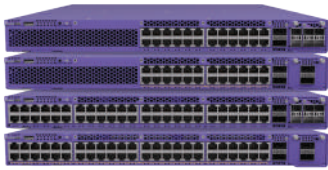


## NX5500, NX7500, NX9600, VX9000 WiNG Controllers

Virtual or physical appliances provide comprehensive cloud-ready wireless services from a single point of control for any size

### Key Features

- Unprecedented scalability, for largest deployments or specific needs of the branch
- Hierarchical software allows uses of various size controllers, as well as controller-less branches to be managed

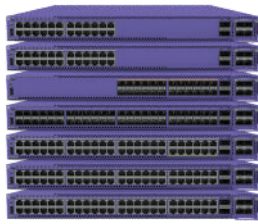


### 5720 Series

Universal edge/aggregation switches with user-selectable choice of Extreme operating systems

#### Key Features

- 24 and 48-port multi-gig models with 1, 2.5, 5 and 10 Gigabit Ethernet connectivity
- Up to 90W PoE available on all 48 access ports
- Support for 2 x 100Gb or 6 x 25Gb modular uplink options for near-line rate backhaul
- 1-year free ExtremeCloud IQ Pilot subscription included with each 5720 system



### 5520 Series

Universal edge/aggregation switches with user-selectable choice of Extreme operating systems

#### Key Features

- Range of 24- and 48-port models with Gigabit, Multi-Gigabit and 10 Gigabit Ethernet Connectivity
- Supports 10G and 25G modular uplinks for flexible linkage to other switches or devices
- 30W, 60W, and 90W PoE support (IEEE 802.3at/IEEE 802.3bt)
- 1-year free ExtremeCloud IQ Pilot subscription included with each 5520 system

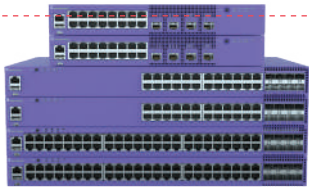


### 5420 Series

Universal edge switches with user-selectable choice of Extreme switch operating systems

#### Key Features

- Fixed and modular Range of 24- and 48-port models with 1 Gigabit and 2.5 Multi-Gigabit Ethernet connectivity
- 14 models to address a range of end-user needs and price points
- 30W, 60W and 90W PoE support (IEEE 802.3at/IEEE 802.3bt)
- 1-year free ExtremeCloud IQ Pilot subscription included with each 5420 system



### 5320 Series

Universal edge switches with user-selectable choice of Extreme switch operating systems

#### Key Features

- Fixed 16, 24 and 48-port models with Gigabit Ethernet connectivity
- 30W PoE support (IEEE 802.3at)
- 1-year free ExtremeCloud IQ Pilot subscription included with each 5320 system
- Silent mode (fan-off) operation on 16-port models



### 8520 Series

Leaf switches with trusted delivery for data center and mobile edge

#### Key Features

- Measured Boot provides a means to validate both hardware and boot loader from the manufacturing site to initial deployment
- Remote Attestation increases visibility with an off-box challenger that provides trust with ongoing binary-level validation
- Baseboard Management Controller (BMC) for lights-out management (LOM) for remote operations such as reboots, shutdowns, and out of band troubleshooting



### 8720

Spine Switch for data center and mobile edge

#### Key Features

- Redundant management port
- Measured Boot provides a means to validate both hardware and boot loader from the manufacturing site to initial deployment
- Remote Attestation increases visibility with an off-box challenger that provides trust with ongoing binary-level validation
- Baseboard Management Controller (BMC) for lights-out management (LOM) for remote operations such as reboots, shutdowns, and out of band troubleshooting



**X435**

Standalone switches for edge, branch and small site deployment

**Key Features**

- Multiple 8-port and 24-port GbE models with up to 4 x 2.5 GbE ports
- PoE/PoE+ models for powered connection of end points
- Fanless models for silent operation - ideal for classrooms, offices or retail locations

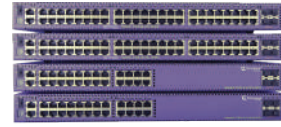


**X440-G2**

Cost-effective edge and access switch

**Key Features**

- 12, 24 and 48-port Gigabit ExtremeXOS stackable switches for wiring closet and edge applications
- Fabric Attach enabled PoE (30W) and non-PoE models with 1/10GbE uplink options
- Fixed power supplies and fans; external redundant power options
- Up to 8 units in a stack with up to 40GbE virtual bandwidth/ heterogeneous stacking

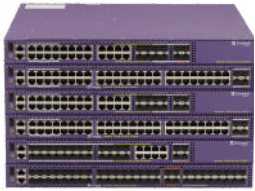


**X450-G2**

Advanced edge and access switch

**Key Features**

- 24 and 48-port Gigabit ExtremeXOS stackable switches for wiring closet and edge applications
- Fabric Attach enabled 30W PoE and non-PoE models and 1/10GbE uplink options
- Modular hot-swappable fans and power supplies
- Up to 8 units in a stack with up to 84GbE virtual bandwidth/ heterogeneous stacking

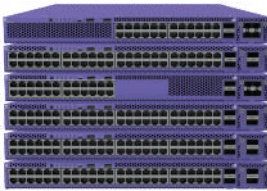


**X460-G2**

Scalable edge/aggregation switch

**Key Features**

- 24 and 48-port Gigabit ExtremeXOS stackable switches for wiring closet, aggregation and edge applications
- Fabric Attach enabled PoE (30W) and non-PoE models with 1/10/40GbE modular uplink options
- 1Gb/2.5Gb multi-rate model supporting up to 16 multi-rate ports
- Up to 8 units in a stack with up to 160GbE virtual bandwidth/ heterogeneous stacking

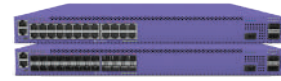


**X465**

Premium stackable edge and aggregation switch

**Key Features**

- 24 and 48-port ExtremeXOS stackable switches for next-gen edge and aggregation applications
- Fabric Attach enabled Gigabit/Multi-rate models with 30W/60W/90W PoE, MACsec and modular 10/25/40GbE uplink options
- Extreme Integrated Application Hosting to support VM-based third party applications
- Extreme Edge Switching aggregation node supporting up to 48 x V300 edge devices

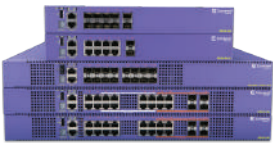


**X590**

24-port 10GbE aggregation switch

**Key Features**

- Fixed-form ExtremeXOS stackable switches for aggregation and leaf deployments
- Available in copper and fiber model versions each with 24 x 10GbE ports and 2 x 100GbE uplinks
- Extended Edge Switching aggregation node supporting up to 48 x V400 edge devices
- Up to 8 units in a stack with up to 400GbE virtual bandwidth/ heterogeneous stacking with X870 and X690



**X620**

Compact 10GbE edge switch

**Key Features**

- 10 and 16-port 10GbE ExtremeXOS switches for high-performance workgroups and 10GbE edge applications
- Fiber SFP+ 10GbE models for flexible deployment
- Up to 8 units in a stack with up to 40GbE of virtual bandwidth/heterogeneous stacking with X440-G2, X450-G2, X460-G2, X670-G2 and X770



**X670-G2**

48- and 72-port 10GbE aggregation switch

**Key Features**

- Fixed-form ExtremeXOS stackable switches for aggregation and top-of-rack deployments
- Two models with 48 x 10GbE and 72 x 10GbE fiber SFP+ ports, respectively
- Extended Edge Switching aggregation node supporting up to 48 x V400 edge devices
- Up to 8 unit stacking with up to 320GbE virtual bandwidth/ heterogeneous stacking with X440-G2, X450-G2, X460-G2, X620 and X770



**X690**

48-port 10GbE aggregation switch

**Key Features**

- Fixed-form stackable ExtremeXOS switches for aggregation, leaf and top-of-rack deployments
- Available in copper and fiber models each with 48 x 10GbE ports and 4 x 100GbE uplinks
- Extended Edge Switching aggregation node supporting up to 48 x V400 edge devices
- Up to 8 unit stacking with up to 400GbE virtual bandwidth/ heterogeneous stacking with X870 and X590

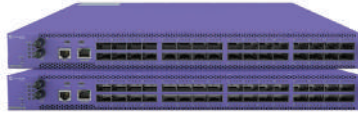


**X695**

48-port 10GbE aggregation switch

**Key Features**

- Fixed-format stackable ExtremeXOS switch for aggregation and spine/leaf deployments
- 48-ports of 1/10/25GbE with 8 ports of 10/25/40/50/100GbE ports
- Controlling aggregation switch for V300/V400 edge devices with Extended Edge Switching solution
- Up to 8 unit stacking with X465, X590, X690, X695 or X870



**X870**

100/40GbE core/aggregation switch

**Key Features**

- Fixed-form 100/50/40/25/10 Gb ExtremeXOS switches for spine, leaf and top-of-rack deployments
- 32 x 100Gb/40Gb ports with ability to channelize up to 128 x 25GbE/10GbE ports or 64 x 50GbE ports
- 6.4 Terabits of switching bandwidth in a 1RU form factor
- Up to 8 units in a stack with 400GbE bandwidth/heterogeneous stacking with X690/X590

EXTREME EXTENDED EDGE SWITCHES



**V300 Series**

Simplified edge switch centrally powered by ExtremeXOS

**Key Features**

- 8-port Gigabit PoE switches that seamlessly runs services on a central ExtremeXOS switch
- 30W PoE and non-PoE models with 1GbE uplinks comprising the edge dge component of Extreme's Extended Edge Switching solution
- Connects to 5420, 5520, X465, X590, X670-G2 and X690 aggregation switch for centralized management and services
- Plug and play set-up, single point of control reduces complexity and operational cost



**V400 Series**

Simplified edge switch centrally powered by ExtremeXOS

**Key Features**

- 24 and 48-port Gigabit switches that seamlessly run services on a central ExtremeXOS switch
- 30W PoE and non-PoE models with 10GbE uplinks comprising the edge component of Extreme's Extended Edge Switching solution
- Connects to X690, X670-G2, X590 or X465 aggregation switch for centralized management and services
- Plug and play set-up, single point of control reduces complexity and operational cost



### ExtremeAccess Platform

Compact WAN access devices for distributed networks

#### Key Features

- Fabric Connect-enabled devices that enable secure fabric service extension to branch offices over MPLS WANs or Internet connections
- Enables security and micro-segmentation end to end from central site to branch offices
- Offers native support for Fabric Extend or supports IPSec encryption for WAN extension
- Two models with 6 ports of 1 GbE copper ports, along with 2 ports of 1/10 GbE SFP+ ports



### VSP 4900

Compact fixed form aggregation, metro edge or WAN access switches

#### Key Features

- Fabric Connect enabled switches for campus aggregation, metro edge and WAN access deployments
- Fixed-form variants with native support for Fabric Extend and MACsec link encryption in a 1RU form factor
- Multiple 12, 24 and 48-port copper, fiber and multi-rate access ports with flexible 10/25/40 GbE uplinks
- Extreme Integrated Application Hosting to support VM-based third party applications



### VSP 7400

Compact fixed form 25/100 gigabit core/aggregation switches

#### Key Features

- Fabric Connect enabled switch for campus core/aggregation, spine-leaf, or top-of-rack deployments
- Extreme Integrated Application Hosting to support VM-based third party applications
- VSP 7400-32C: core or spine switch with 32x100GbE QSFP ports that can be optionally channelized to 10/25/40 GbE
- VSP 7400-48Y-8C: aggregation or leaf switch with 48 ports of 25GbE SFP 28 ports and 8 ports or 100Gb QSFP28 uplink ports that can be optionally channelized to 1/10 and 25 GbE

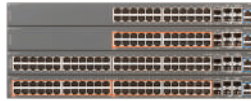


### VSP 7200

Compact fixed form 10/40 gigabit core/aggregation switches

#### Key Features

- Fabric Connect enabled switch for campus core/aggregation, spine-leaf, or top-of-rack deployments
- Scalable to 48 ports of 10GbE connectivity and 6 ports of 40 GbE



### ERS 3600

1/10 GbE wiring closet stackable switches for small to mid-sized businesses

#### Key Features

- Fabric Attach enabled stackable wiring closet switches
- 10/24/48-port models supporting GbE copper ports with optional PoE and PoE+ support and 2 ports of 1/10 GbE for uplink connectivity
- Optional fan-free 10-port model for silent operation
- Up to 8 units in a stack delivering over 80 Gbps of virtual backplane connectivity



### VSP 8400

Compact modular 10/40/100 gigabit aggregation switch

#### Key Features

- Fabric Connect enabled switch for campus core, spine-leaf, or top-of-rack deployments
- Support for 1/10/25/40/100 GbE through a range of I/O modules
- 2.56 Terabits of switching capacity in a 2RU form factor
- Scales to 96 ports of 10 GbE, up to 24 ports of 40 GbE, or up to 8 ports of 100 GbE



### VDX 6740

Compact fixed form leaf switch

#### Key Features

- Simplified Fabric with Virtual Cluster Switching (VCS)
- Multiple 1/10/40 GbE configurations for deployment flexibility
- Delivers line-rate throughput for all ports and packet sizes
- Integration with VMware vCenter and NSX



### SLX 9240

Compact fixed form spine switch

#### Key Features

- Fixed 10/40/100 GbE that supports 24MB of shared packet buffer
- Ability to split 32 x 100/40GbE to 128 x 25/10 GbE with a break out cable
- 6.4 Tbps (3.2 Tbps in and 3.2 Tbps out) of switching capacity in a 1 RU form factor



### SLX 9150

Compact fixed form IP Fabric leaf switch

#### Key Features

- Purpose-built high density 1/10/25/40/100GbE switches with 32MB of packet buffer
- Integrated Extreme Fabric Automation
- SLX-OS supports full IPv4/v6 switching, OSPF, BGP and BGP-EVPN VXLAN overlay
- Open Application Engine with Extreme Integrated Application Hosting with direct 10GbE data path for hosting VM-based third party applications



### SLX 9250

Compact fixed form IP Fabric spine switch

#### Key Features

- Purpose-built 32 x 100/40GbE switch with 32MB of packet buffer
- SLX-OS supports full IPv4/v6 switching, OSPF, BGP and BGP-EVPN VXLAN overlay
- Integrated Extreme Fabric Automation
- Open Application Engine with Extreme Integrated Application Hosting with direct 10GbE data path for hosting VM-based third party applications



### SLX 9740

High-density 100 GbE fixed form factor router for border routing, border leaf and data center spine

#### Key Features

- Ultra-deep buffers of up to 16GB to manage bursty traffic patterns
- Fully featured Router and Switch with carrier-class MPLS, VXLAN, and dual Stack IPv4/IPv6 functionality
- IP Fabric - BGP EVPN-VXLAN for Data Center spine, super spine and data center interconnect (DCI)
- Open Application Engine with Extreme Integrated Application Hosting with direct 10GbE data path for hosting VM-based third party applications



### SLX 9640

High performance compact fixed form router for WAN edge and border routing

#### Key Features

- SLX-OS supports full IPv4/v6 switching, MPLS, VPLS, VLL, OSPF, BGP and BGP-EVPN VXLAN overlay
- Ideal for Internet peering applications or as a data center or enterprise border router with up to 5.7M IPv4 and 1.4M IPv6 (with Optiscale routing)
- Open Application Engine with Extreme Integrated Application Hosting with direct 10GbE data path for hosting VM-based third party applications
- 900 Gigabits of switching capacity in a 1 RU form factor



### SLX 9540

Compact fixed form WAN edge and border router

#### Key Features

- Multiple 1/10/40/100 GbE configurations for deployment flexibility as a router or as a switch
- Ultra-deep buffers for lossless forwarding in demanding data center and WAN applications
- Open Application Engine with Extreme Integrated Application Hosting with direct 10GbE data path for hosting VM-based third party applications
- Guest VM with Extreme Insight Architecture with direct 10 GbE data path



### SLX 9850

High density chassis-based modular data center spine, super spine and WAN edge router

#### Key Features

- Industry's most powerful IPv4, IPv6, MPLS/Multi-VRF and BGP-EVPN data center router
- Innovative 1.5 RU interface module design maximizes port density and scale across multiple generations of forwarding silicon for best in class investment protection
- Up to 230 Tbps non-blocking system switching capacity
- Open Application Engine with Extreme Integrated Application Hosting with direct 10GbE data path for hosting VM-based third party applications





### 200 Series

Economical gigabit access switch for enterprise and smb

#### Key Features

- 12, 24 and 48-port Gigabit access switches ideal for small to medium businesses or distributed enterprises
- 30W PoE and non-PoE models with 1 and 10GbE uplink options
- Flexible management via cloud, web GUI or industry-standard CLI
- Up to 4 units in a stack with comprehensive Layer 2 features along with static and dynamic routing



### ISW Series Industrial Switches

Hardened switch for industrial deployments

#### Key Features

- 4 and 8-port Gigabit PoE switches designed for industrial environments
- Ruggedized enclosure with extended temperature (-40°C - 75°C) support, DIN Rail and wall mounting, and Dual DC power input
- Support for redundant ring topology for fault-tolerant high-availability networking



### XR600

Cloud-managed midsize router

#### Key Features

- Delivers cloud-managed routing for distributed organizations, extending unified, enterprise connectivity to any location.
- Management and Analytics with ExtremeCloud IQ
- Ports: 6x1GE(2 WAN and 4 LAN), 1xUSB 2.0, 1x USB 3.0



### 9920

Cloud Native Visibility Platform

#### Key Features

- Composable data pipeline based on Intel Tofino 2 programmable Ethernet Switch ASIC.
- Cloud-native operating system for rapid service delivery, live patching and containerization
- Massively scalable management architecture that leverages cloud-native API-first design to integrate with OSS/BSS and analytic tool vendors



BAKOTECH is an international group of companies, a flagship in focused Value Added IT Distribution that represents solutions of leading IT vendors. Positioning itself as a True Value Added IT distributor BAKOTECH provides professional pre-sales, post-sales, marketing and technical support for partners and end-customers.

BAKOTECH is the official distributor of Extreme Networks in Ukraine, Armenia, Moldova, Azerbaijan and Georgia.

[extreme.bakotech.com](http://extreme.bakotech.com)

[extreme@bakotech.com](mailto:extreme@bakotech.com)

+380 44 273 3333